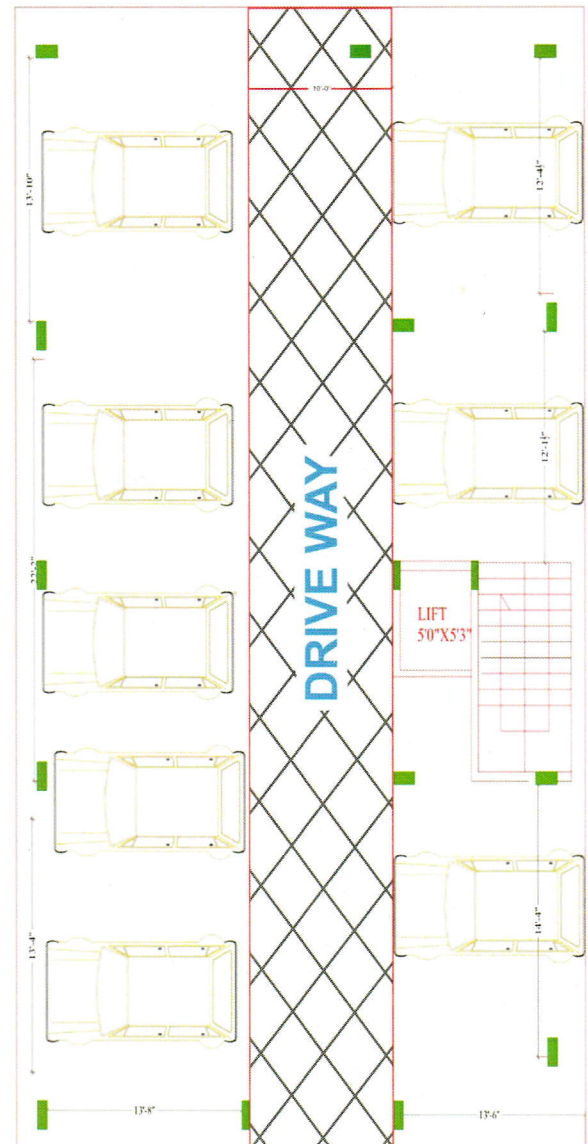




GP CRYSTAL

NAGARBHAVI – BANGALORE



An Address Where work and life are perfectly Balanced.

At last, a home in the heart of the city with all the modern day luxuries and conveniences at GP CRYSTAL.

AMENITIES AND FEATURES



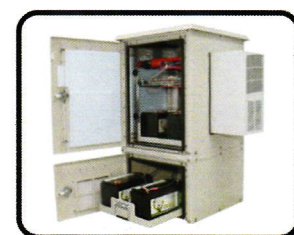
VOICE INTER COMMUNICATION

Each Flat/Unit to Security Room 24/7



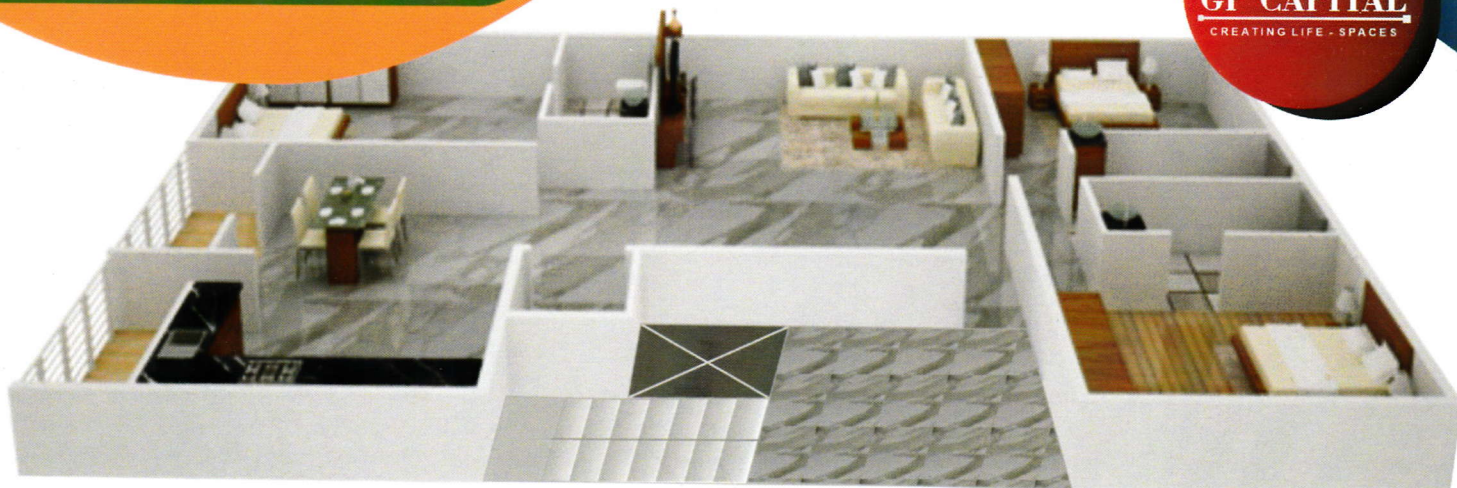
CCTV SURVEILLANCE

Road Way Entrance Parking, Common Lobbies.



POWER BACKUP

COMMON AREAS, PARKING



AREA- SBA - 2390 Sq.ft / 222 Sq.Mtr.

Unit Facing – East

Type – 3 BR

Flooring – PREMIUM Vitrified tile.

SPECIFICATIONS | THAT ARE CAREFULLY DESIGNED AND TOP-NOTCH!

STRUCTURE

- RCC framed structure designed for Seismic forces.

BLOCK MASONRY

- Masonry Walls shall be made from Solid Concrete block of Reputed Make.

LOBBIES & ENTRANCE

- Elegant ground floor entrance lobby with granite tile flooring.

APARTMENT FLOORING

- Vitrified tiles in living, dining, bedrooms, passages leading to bedrooms & balconies.

KITCHEN & UTILITY

- Vitrified tile flooring in kitchen.
- Vitrified tile Dado up to 2' ht above kitchen counter-top.
- Highly polished granite for kitchen counter top.
- Good quality single bowl, single drain stainless Steel sink (o).
- Provision for water purifier above the drain board.
- Vitrified tile flooring in utility area.
- Provision for washing machine in utility.

BATHROOM

- Anti skid/matt ceramic designer tile flooring.
- Colored glazed designer tiles up to the false ceiling on walls.
- Master Bathroom - Shower area head rose with wall mixer and wash basin with hot & cold water mixer.
- Other Bathrooms – Shower area with head rose and wall mixer and wash basin.
- All bathrooms are fitted with Standard EWC + Flush & premium Quality CP fittings & sanitary fixtures.

DOORS

- Main door – Pre Engineered Teak wood frame with BSTV (Both Side Teak Veneer) / Masonite skin shutter with melamine polishing on both sides with good quality hardware.
- Bedroom doors – pre Engineered wooden door frame and shutter OR HDF doors with hardwood frame OR equivalent with good quality hardware.
- Bathroom doors – Water proofed (inside) flush door with hardwood frame OR equivalent with good quality hardware.
- Balconies of living & dining – Glazed French windows with heavy gauged UPVC/Aluminum frames with sliding/hinged shutter.

WINDOWS

- Heavy gauged UPVC frames with glazed, sliding/hinged shutters with M. S. Grills.
- Utility window- UPVC glazed window with sliding/ hinged shutters.

VENTILATORS

- Heavy gauged, Aluminum/UPVC with glazed louvered/hinged/fixed ventilators.
- Provision for exhaust fan point.

ELECTRICAL

- All electrical wiring is concealed in walls & ceilings with premium quality PVC conduits.
- Adequate power outlets for lights, fans, exhaust-fans, call-bell and television are provided in all bedrooms, living and dining area.
- AC point in master bedroom and provision in other bedrooms and living & dining area.
- Telephone outlet in living area and master bedroom.
- Television outlet in all bedrooms and living area.
- Internet connectivity in master bedroom.

SOLAR

- Solar piping Provision For last Floor of the Apartment (o)

OTHERS

- 2 Car parking Per Flat.
- Both Bore well and corporation water conectoins with water sump and pump
- Well-designed landscaped areas for recreation

ELEVATORS & POWER BACKUP

- Automatic 6 passenger lifts are provided in every block.
- Back-up for common area lighting and lifts.
- power backup is provided for Common areas through invertors

PAINTING

- Acrylic based paint & textures surfaces in selective places as per design for exterior fascia of the building.
- Int erior walls are paint ed with oil bound distemper.
- Steel & wood works in synthetic enamel paint.

SECURITY SYSTEM & INTRA COMMUNICATION SYSTEM

- Intra-communication facility provided from security to every apartment.

Location Advantage
A HOME WHERE HAPPINESS IS DELIVERED



NEAR BY SCHOOLS

Ambedkar Engineering College,
Bangalore University, Orchids
International School And Many More



NEAR BY LIFESTYLE

Zen Park, Café Coffee Day,
More Super Market, BGS Gopal....

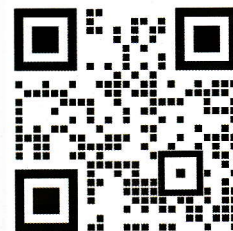


HOTSPOTS NEAR BY

Gyms, Pubs, Restuarants,
Metro Station



E-mail : gpcapital22@gmail.com



SCAN FOR GOOGLE MAPS

CALL US:
79750-63434 / 94498-54057